



TECHIK INSTRUMENT (SHANGHAI) CO., LTD

Address: No 118, Lane 3509, South Hongmei Road, Minhang District, Shanghai, China

After-sales service hotline: 400-821-8709

Website: www.techigroup.com

E-mail: sales@techik.net

TECHIK INSTRUMENT (HEFEI) CO., LTD

Address: 3rd Floor, Building 4, Mingzhu Industrial Park, No. 106, Chuangxin Avenue, High-tech Zone, Hefei, China

TECHIK INSTRUMENT (SUZHOU) CO., LTD

Address: No. 7, Gaoyang Road, Huangdai Town, Xiangcheng District, Suzhou, China

TECHIK SECURITY (SHANGHAI) CO., LTD

Address: No 88, Lane 3509, South Hongmei Road, Minhang District, Shanghai, China



Official website



Colorsorter website



Video website



Facebook



YouTube



HIGH-DEFINITION HIGH-SPEED X-RAY INSPECTION SYSTEM FOR NUTS SORTING

TXR-B3-N SERIES








TXR-B3-N

HIGH-DEFINITION HIGH-SPEED X-RAY INSPECTION SYSTEM FOR NUTS SORTING

> PRODUCT INTRODUCTION

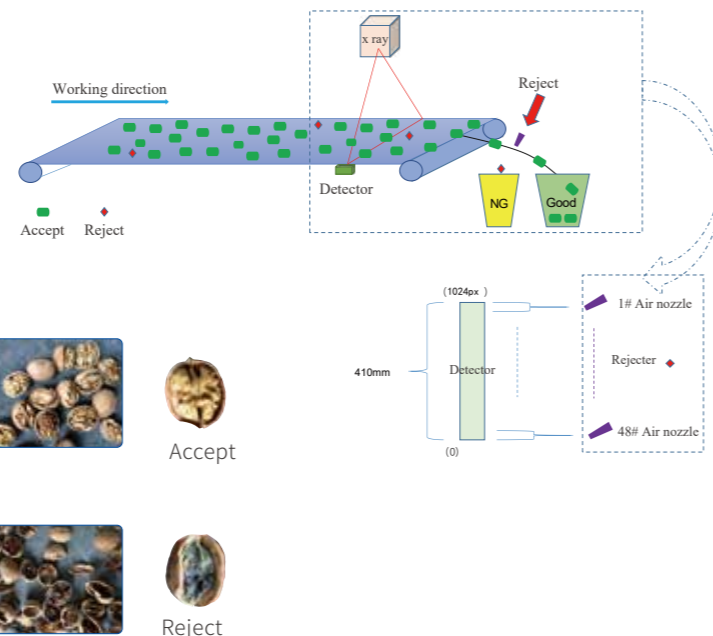
High-definition High-speed X-ray Inspection System for Nuts Sorting sorts and detects defects such as empty shells, shrinkage, mildew, and wormholes in nut products. Based on the TIMA platform, equipped with high-definition high-speed detectors, special software for nut shell detection, and a self-developed real-time system, together with a high-speed spray valve system, High-definition High-speed X-ray Inspection System for Nuts Sorting achieves higher precision, higher speed, and smaller carry-out, so as to get greater output, lower loss and higher efficiency.

> PRODUCT CHARACTERISTICS

 <p>Advanced image processing algorithm clearly shows the details of nut defects, and the sticky material does not affect the detection effect</p>	 <p>Ultra-high detection speed of 120m/min, greatly increasing the production capacity of a single machine</p>	 <p>Tailor-made conveying system to ensure material stability and easily realize point-to-point precise removal</p>	 <p>Synchronous detection and removal of empty shells and foreign objects</p>	 <p>Quick dismantling structure saves time and effort for maintenance and reduces maintenance costs</p>
---	---	--	---	--

> WORKING PRINCIPLE

- Through the feeding system, the material is homogenized and accelerated into the X-ray detection system.
- The image processing system analyzes the image of the material, obtains the corresponding detection results and drives the removal device to perform the separation action.
- Accepted products fall from the outlet at the rear end of the ejector, and rejected products are blown down into the waste hopper by the gas ejected from the injection.



Accept



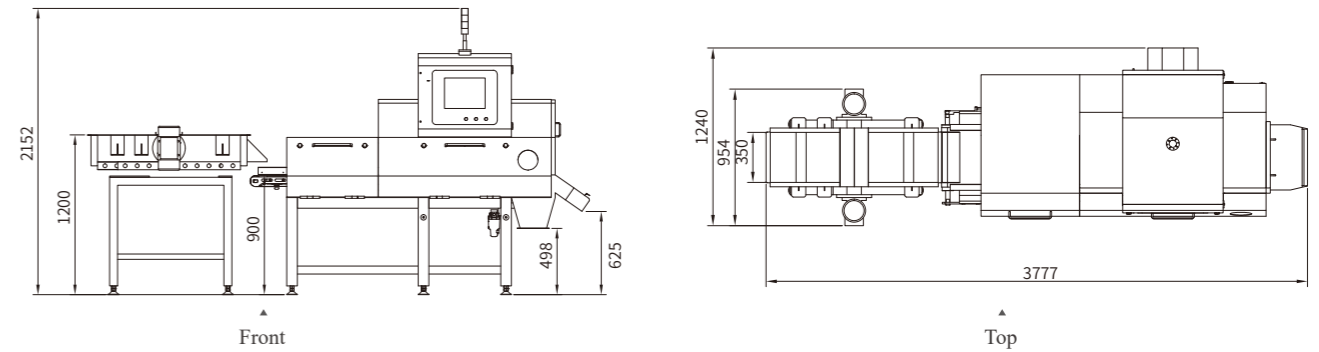
Reject

Raw material sorting

X-ray inspection

> PRODUCT STRUCTURE DIAGRAM

Take TXR-B3-4010-N as an example.



> DETAILED DESCRIPTION

Model	TXR-B3-4010-N	TXR-B3-6010-N
X-ray tube	350W	
X-ray detector	0.8mm detector/high definition 0.4mm is optional	
Maximum detection width	400	600
Maximum detection height	100	100
Conveyor speed	10~120m/min	
Working environment	Temperature -10°C~40°C, humidity <90%	
X-ray leakage	≤1usv/h, prevent X-ray leakage through safety protection device	
Screen	15 inch touch screen	
Rejecter	48/72/108 air jet rejecters are optional	
Power supply	AC220V, 2KVA Max, 50/60Hz	
Air pressure	0.4MPa~0.6MPa	
IP level	IP66 (tunnel)	
Machine material	SUS304	

> SCOPE OF APPLICATION



Large walnut

Small walnut

Macadamia nuts

Pecans

Almond